


DECISION POINT MAP

 NAVY SPORTS FIELDS
NGATARINGA BAY

DECISION POINT

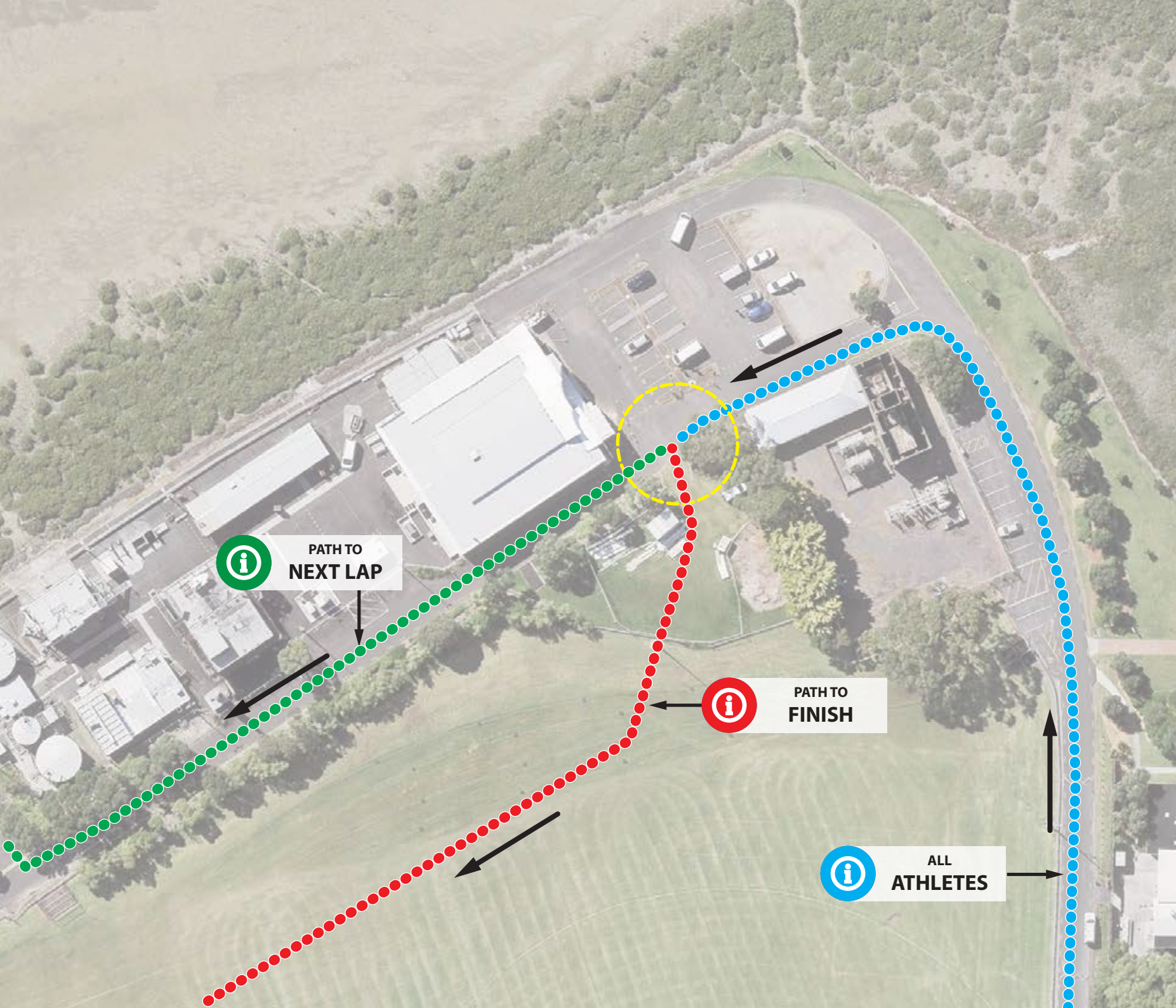
All participants follow the Navy Fields perimeter road in a counter-clockwise direction, turning left at the northern end. The decision point (within the yellow circle on the map) is around 50 metres after the turn..

HEADING FOR FINISH:

Keep left approaching the decision point and BEAR LEFT over the lowered kerb, onto the grass and through the gap in the perimeter barrier towards the finish line.

HEADING FOR NEXT LAP:

Keep to the right approaching the decision point and continue AHEAD on the perimeter road. A right and left turn will take you past the lap start aid station and under the start arch to begin your next lap.



 PATH TO NEXT LAP

 PATH TO FINISH

 ALL ATHLETES

Harcourts Cooper & Co

 NAVY FIELDS
RUN
DEVONPORT